

**NOTE:**  
-INSTALLER IS RESPONSIBLE FOR PROPER  
INSTALLATION AND FOUNDATION BASED  
ON SITE WIND LOADING AND LOCAL BUILDING CODES.  
-SUBJECT TO LOCAL STRUCTURAL ENGINEERING APPROVAL

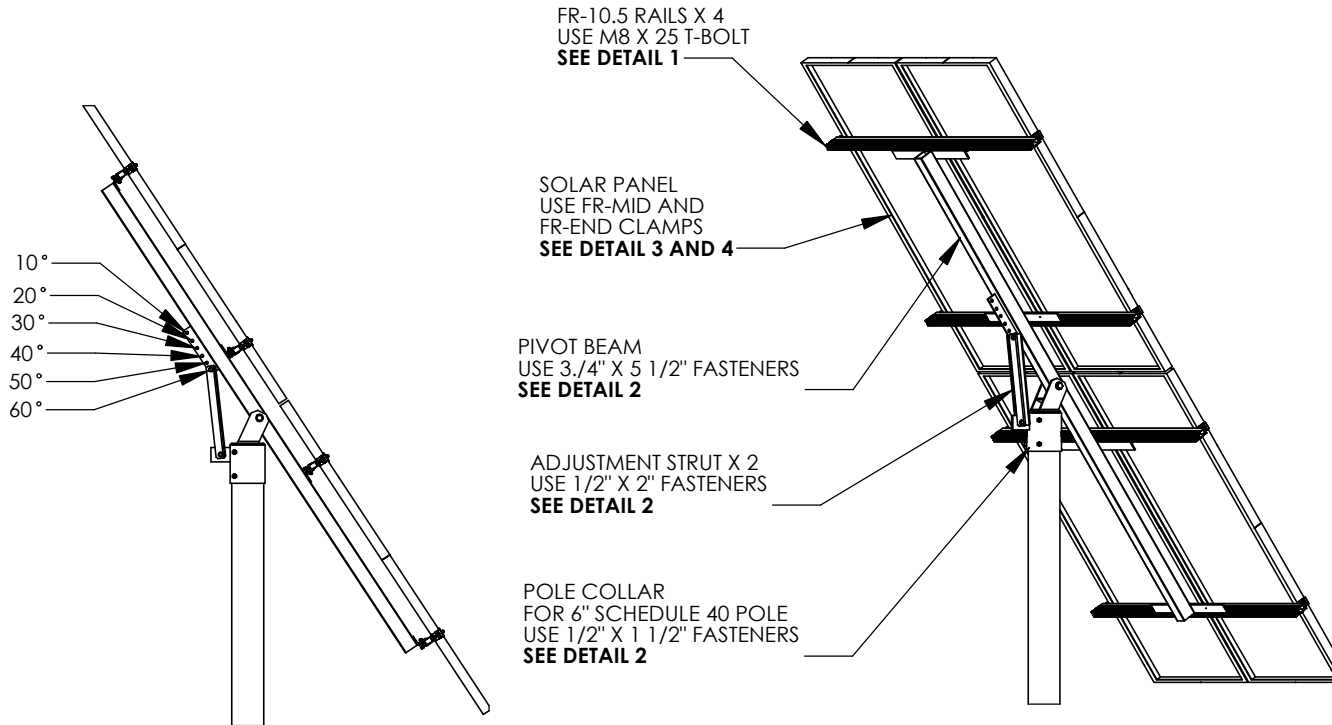
**NOTE:**  
-TO BE WIRED BY QUALIFIED TECHNICIAN  
IN ACCORDANCE WITH LOCAL ELECTRICAL CODES.

**NOTES:**

- ①
- ② -
- ③ -

**NOTE:**

MOUNT FOR 4 X LR4-72 (HBD ONLY) OR LR5-66  
LOCATION MUST BE CONFIRMED PRIOR TO QUOTING



H.E.S. PV

84 MORROW RD.  
BARRIE, ON L4N 3V8  
1-866-258-0110  
WWW.HESPV.COM

PROJECT:

-

USED ON ASS'Y:

-

CLONE FROM:

100888

UNLESS OTHERWISE SPECIFIED:

DIMENSIONS ARE IN INCHES  
TOLERANCES:  
FRACTIONAL  $\pm 1/16$   
ANGULAR: MACH  $\pm$  BEND  $\pm$   
TWO PLACE DECIMAL  $\pm 0.06$   
THREE PLACE DECIMAL  $\pm 0.03$

INTERPRET GEOMETRIC  
TOLERANCING PER:

MATERIAL:

FINISH:

DRAWN

CHECKED

ENG APPR.

MFG APPR.

Q.A.

NAME

AT

-

-

-

-

DATE

5/24/17

-

-

-

-

TITLE: FR-TPM4-UNI ASSEMBLY

DWG. NO.

105331

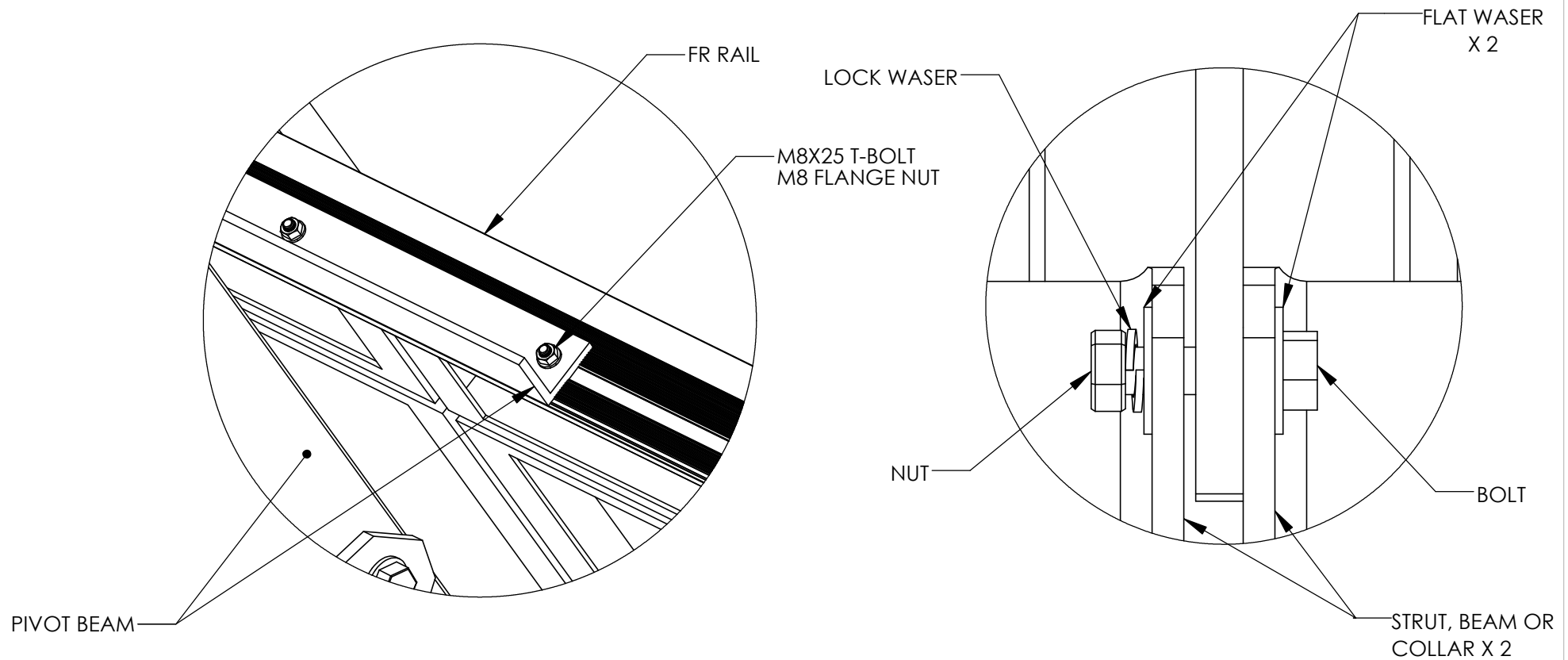
REV

-

SCALE: NTS

SHEET SIZE: A

SHEET 1 OF 4

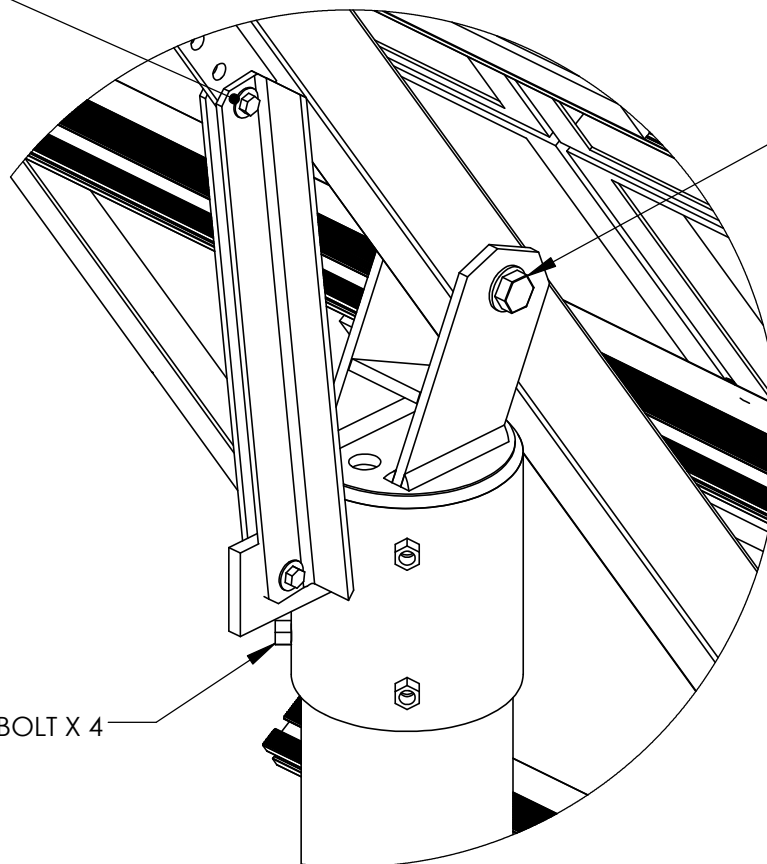


H.E.S. PV			UNLESS OTHERWISE SPECIFIED:			NAME	DATE	TITLE: FR-TPM4-UNI ASSEMBLY		
84 MORROW RD. BARRIE, ON L4N 3V8 1-866-258-0110 WWW.HESPV.COM		PROJECT:	—	DIMENSIONS ARE IN INCHES TOLERANCES: FRACTIONAL ± 1/16 ANGULAR: MACH± BEND ± TWO PLACE DECIMAL ± 0.06 THREE PLACE DECIMAL ± 0.03 INTERPRET GEOMETRIC TOLERANCING PER:	DRAWN	AT	5/24/17	DWG. NO. <div>105331</div> <div>REV —</div>		
				CHECKED	-	-				
				ENG APPR.						
				MFG APPR.						
PROPRIETARY AND CONFIDENTIAL THE INFORMATION CONTAINED IN THIS DRAWING IS THE SOLE PROPERTY OF HOME ENERGY SOLUTIONS. ANY REPRODUCTION IN PART OR AS A WHOLE WITHOUT THE WRITTEN PERMISSION OF H.E.S. PV IS PROHIBITED.		USED ON ASS'Y:	-	MATERIAL:				SCALE: NTS    SHEET SIZE: <b>A</b> SHEET 2 OF 4		
		CLONE FROM:	100888	FINISH:	Q.A.					

1/2" x 2" STAINLESS STEEL BOLT x 2  
 1/2" STAINLESS STEEL FLAT WASHER x 4  
 1/2" STAINLESS STEEL LOCK WASHER x 2  
 1/2" STAINLESS STEEL NUT x 2

3/4" X S 1/2" STEEL BOLT X 1  
 3/4" STEEL FALT WASHER X 2  
 3/" STEEL LOCK WASHER X 1  
 3/4" STEEL NUT X 1

1/2" X 1 1/2" STEEL BOLT X 4



H.E.S. PV

84 MORROW RD.  
 BARRIE, ON L4N 3V8  
 1-866-258-0110  
 WWW.HESPV.COM

PROJECT:

-

USED ON ASS'Y:

-

CLONE FROM:

100888

UNLESS OTHERWISE SPECIFIED:

DIMENSIONS ARE IN INCHES  
 TOLERANCES:  
 FRACTIONAL  $\pm 1/16$   
 ANGULAR: MACH  $\pm$  BEND  $\pm$   
 TWO PLACE DECIMAL  $\pm 0.06$   
 THREE PLACE DECIMAL  $\pm 0.03$

INTERPRET GEOMETRIC  
 TOLERANCING PER:

MATERIAL:

FINISH:

DETAIL G

SCALE 1:6

MFG APPR.

Q.A.

NAME

AT

-

ENG APPR.

MFG APPR.

Q.A.

DATE

5/24/17

-

-

-

-

TITLE: FR-TPM4-UNI ASSEMBLY

DWG. NO.

105331

REV

-

SCALE: NTS

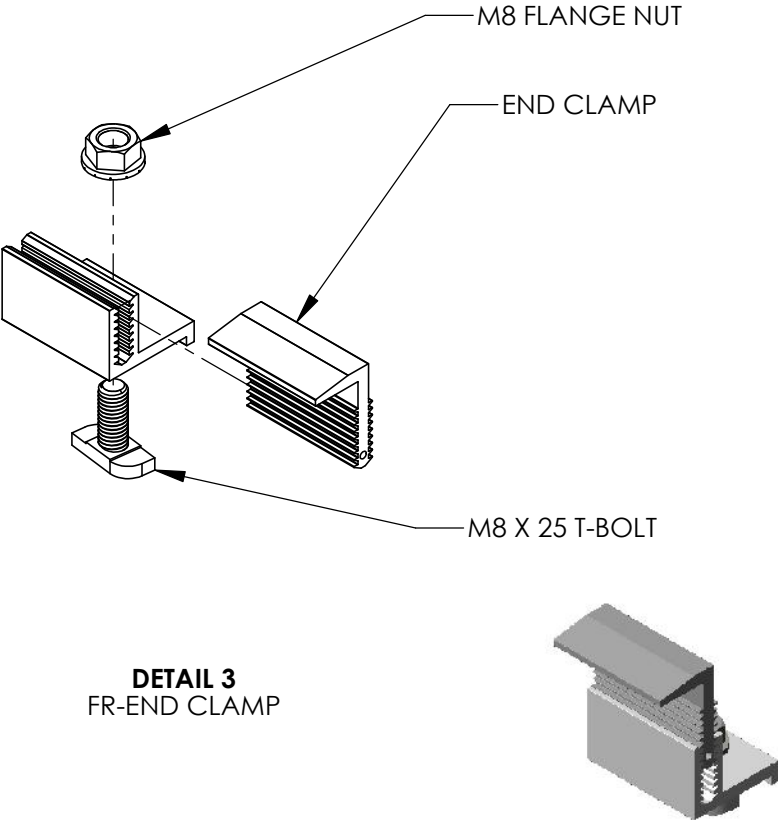
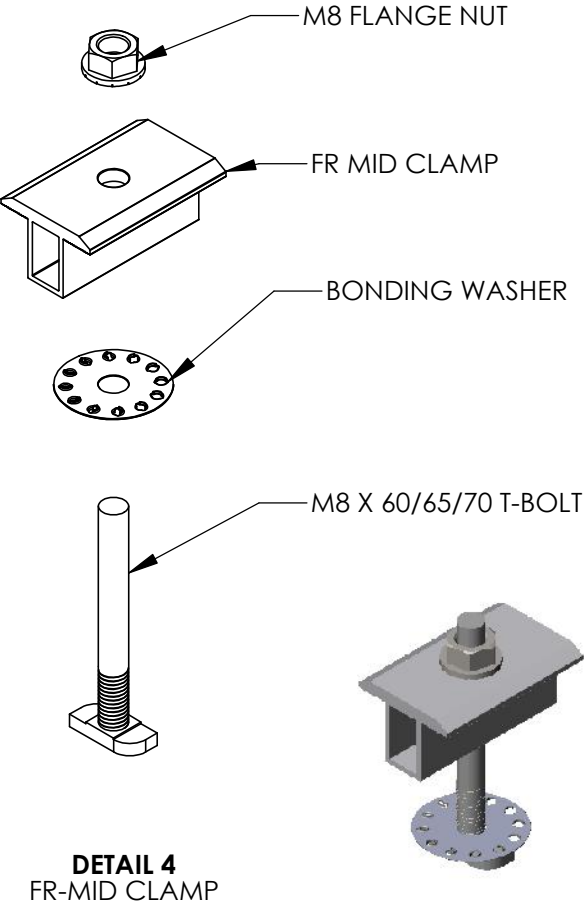
SHEET SIZE: A

SHEET 3 OF 4

**PROPRIETARY AND CONFIDENTIAL**  
 THE INFORMATION CONTAINED IN THIS DRAWING IS THE SOLE PROPERTY OF  
 HOME ENERGY SOLUTIONS. ANY REPRODUCTION IN PART OR AS A WHOLE  
 WITHOUT THE WRITTEN PERMISSION OF H.E.S. PV IS PROHIBITED.

NOTES:

-BONDING WASHER TO BE USED ON EVERY MID CLAMP



H.E.S. PV		<div>UNLESS OTHERWISE SPECIFIED:</div> <div>DIMENSIONS ARE IN INCHES</div> <div>TOLERANCES:</div> <div>FRACTIONAL <math>\pm 1/16</math></div> <div>ANGULAR: MACH <math>\pm</math> BEND <math>\pm</math></div> <div>TWO PLACE DECIMAL <math>\pm 0.06</math></div> <div>THREE PLACE DECIMAL <math>\pm 0.03</math></div> <div>INTERPRET GEOMETRIC TOLERANCING PER:</div> <div>MATERIAL:</div> <div>FINISH:</div>		NAME		DATE		TITLE: FR-TPM4-UNI ASSEMBLY							
84 MORROW RD. BARRIE, ON L4N 3V8 1-866-258-0110 WWW.HESPV.COM				PROJECT:		DRAWN		AT		5/24/17		DWG. NO. <div>105331</div>		REV -	
				—		CHECKED		-		-					
						ENG APPR.									
<div>PROPRIETARY AND CONFIDENTIAL</div> <div>THE INFORMATION CONTAINED IN THIS DRAWING IS THE SOLE PROPERTY OF HOME ENERGY SOLUTIONS. ANY REPRODUCTION IN PART OR AS A WHOLE WITHOUT THE WRITTEN PERMISSION OF H.E.S. PV IS PROHIBITED.</div>		USED ON ASS'Y:		-		MFG APPR.				SCALE: NTS		SHEET SIZE: <b>A</b>		SHEET 4 OF 4	
		CLONE FROM:		100888		FINISH:		Q.A.							
5		4		3		2		1							