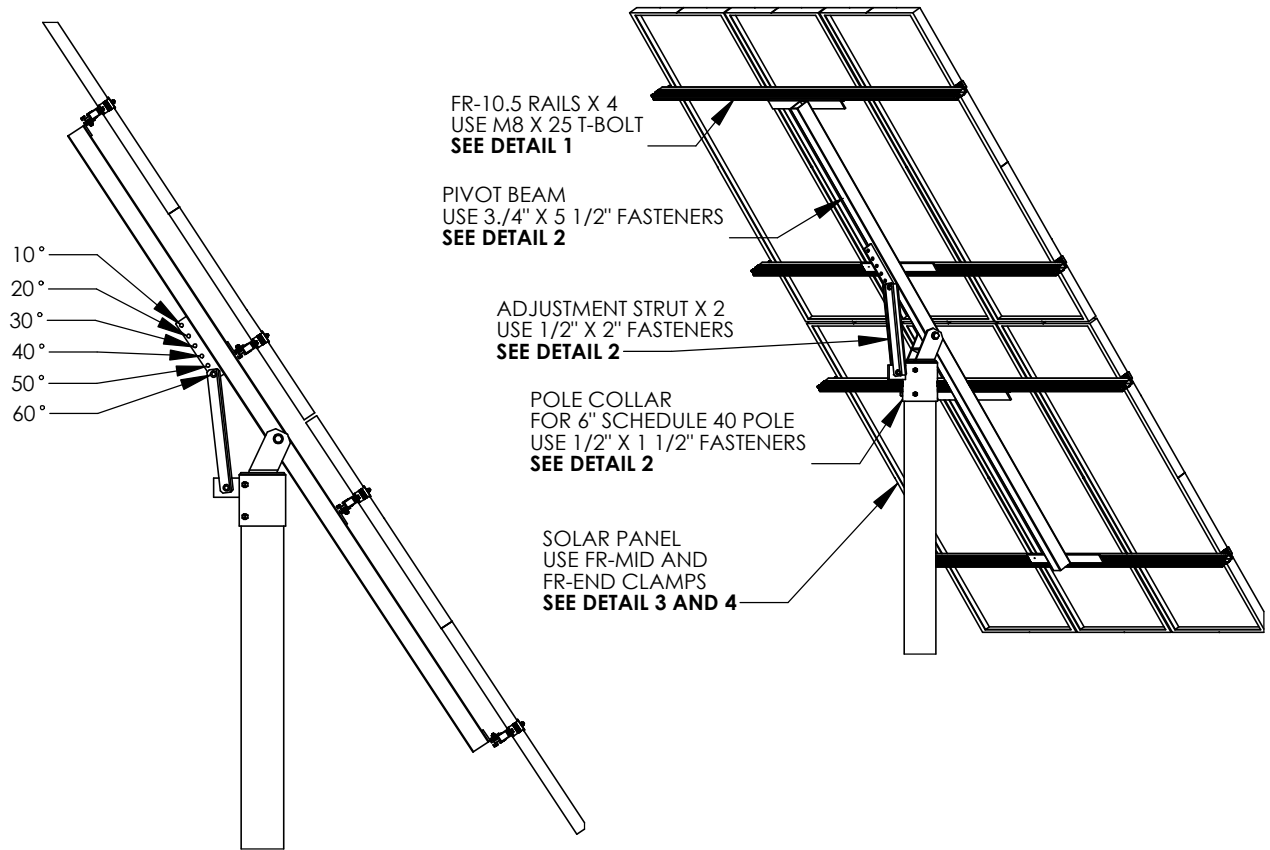


**NOTE:**  
-INSTALLER IS RESPONSIBLE FOR PROPER  
INSTALLATION AND FOUNDATION BASED  
ON SITE WIND LOADING AND LOCAL BUILDING CODES.  
-SUBJECT TO LOCAL STRUCTURAL ENGINEERING APPROVAL

**NOTE:**  
-TO BE WIRED BY QUALIFIED TECHNICIAN  
IN ACCORDANCE WITH LOCAL ELECTRICAL CODES.

**NOTES:**

- ①
- ② -
- ③ -



**NOTE:**  
MOUNT FOR 6 X LR4-72 (HBD ONLY) OR LR5-66  
LOCATION MUST BE CONFIRMED PRIOR TO QUOTING



H.E.S. PV

84 MORROW RD.  
BARRIE, ON L4N 3V8  
1-866-258-0110  
WWW.HESPV.COM

PROJECT:

-

USED ON ASS'Y:

-

CLONE FROM:

100888

UNLESS OTHERWISE SPECIFIED:

DIMENSIONS ARE IN INCHES  
TOLERANCES:  
FRACTIONAL  $\pm 1/16$   
ANGULAR: MACH  $\pm$  BEND  $\pm$   
TWO PLACE DECIMAL  $\pm 0.06$   
THREE PLACE DECIMAL  $\pm 0.03$

INTERPRET GEOMETRIC  
TOLERANCING PER:

MATERIAL:

FINISH:

DRAWN

NAME

AT

DATE

5/24/17

CHECKED

-

-

ENG APPR.

MFG APPR.

Q.A.

TITLE: FR-TPM6-UNI ASSEMBLY

DWG. NO.

104983

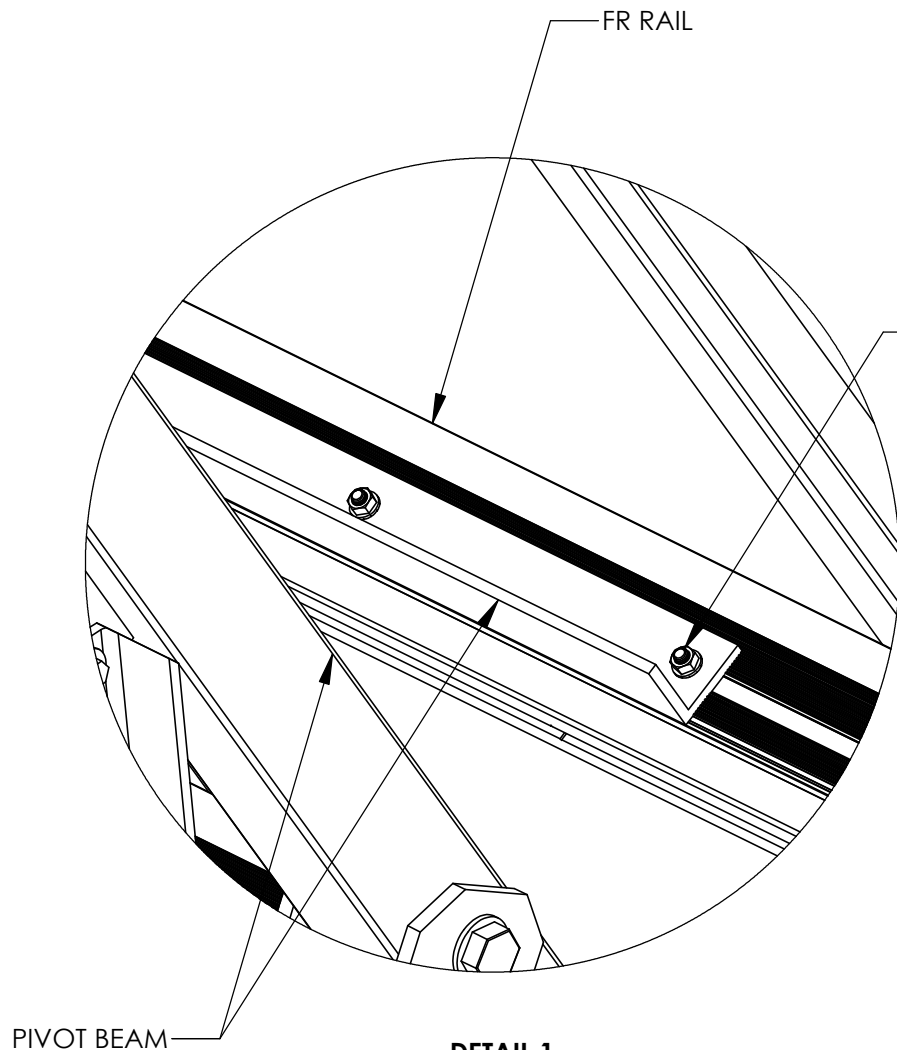
REV

-

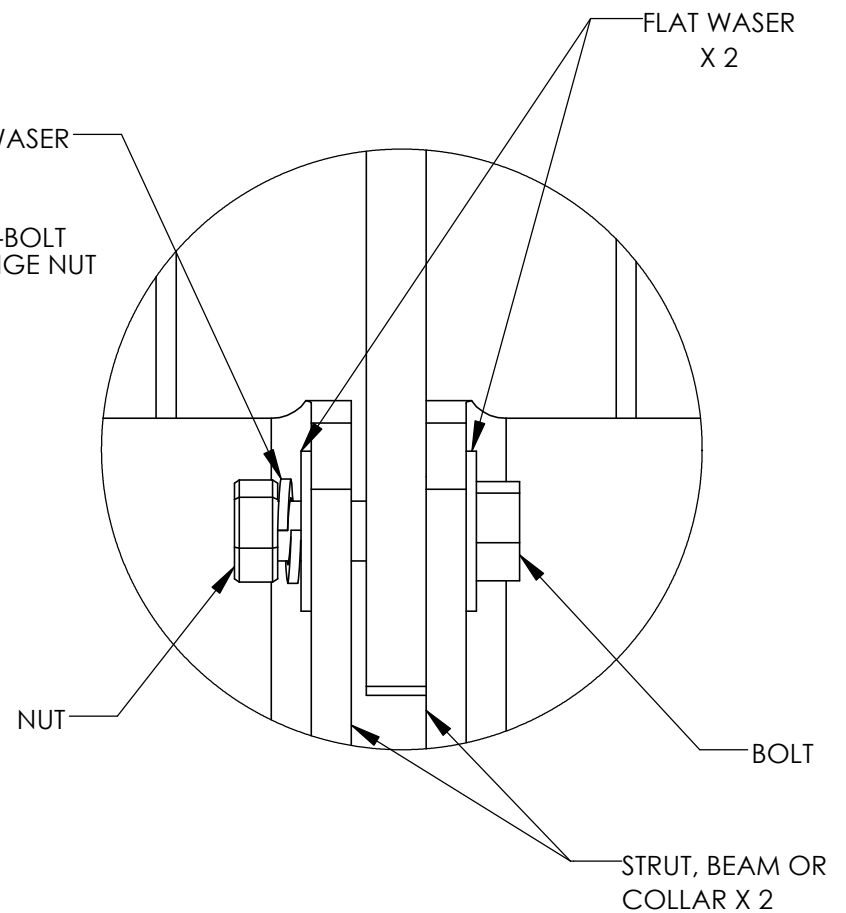
SCALE: NTS

SHEET SIZE: A

SHEET 1 OF 4



**DETAIL 1**  
M8 X 25 T-BOLT  
FR-10.5 RAIL TO PIVOT BEAM



**DETAIL 2**  
Ø3/4, Ø1/2" & Ø3/4" FASTENERS

H.E.S. PV

84 MORROW RD.  
BARRIE, ON L4N 3V8  
1-866-258-0110  
WWW.HESPV.COM

PROJECT:

-

USED ON ASS'Y:

-

CLONE FROM:

100888

UNLESS OTHERWISE SPECIFIED:

DIMENSIONS ARE IN INCHES  
TOLERANCES:

FRACTIONAL  $\pm 1/16$   
ANGULAR: MACH  $\pm$  BEND  $\pm$   
TWO PLACE DECIMAL  $\pm 0.06$   
THREE PLACE DECIMAL  $\pm 0.03$

INTERPRET GEOMETRIC  
TOLERANCING PER:

MATERIAL:

FINISH:

DRAWN

NAME

AT

DATE

5/24/17

CHECKED

-

-

ENG APPR.

MFG APPR.

Q.A.

TITLE: FR-TPM6-UNI ASSEMBLY

DWG. NO.

104983

REV

-

SCALE: NTS

SHEET SIZE: A

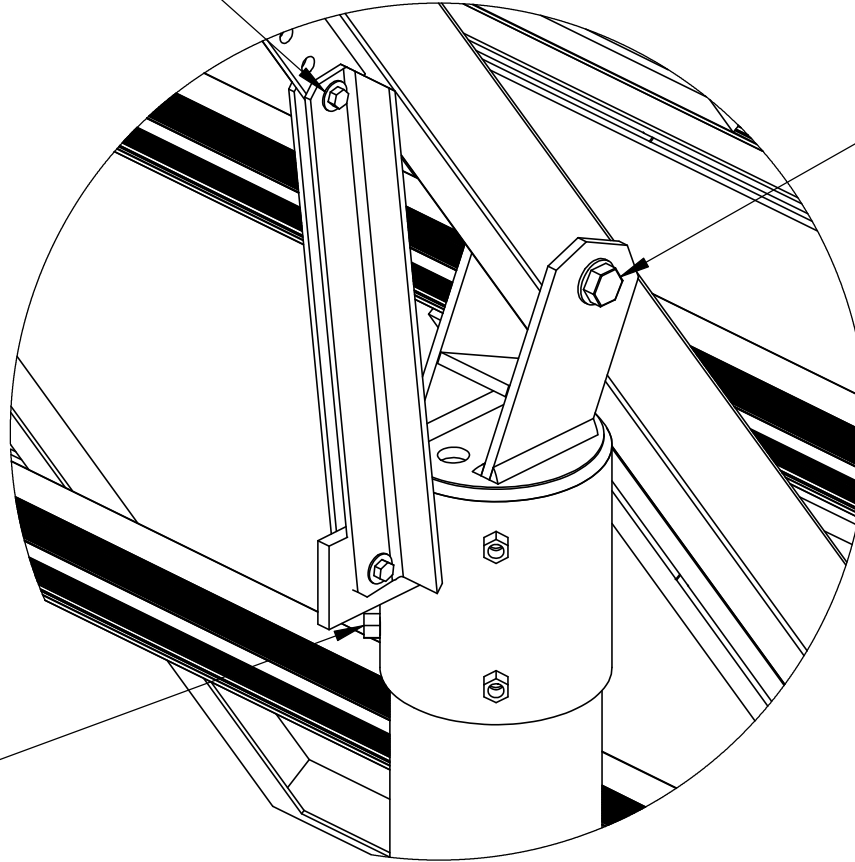
SHEET 2 OF 4

**PROPRIETARY AND CONFIDENTIAL**  
THE INFORMATION CONTAINED IN THIS DRAWING IS THE SOLE PROPERTY OF  
HOME ENERGY SOLUTIONS. ANY REPRODUCTION IN PART OR AS A WHOLE  
WITHOUT THE WRITTEN PERMISSION OF H.E.S. PV IS PROHIBITED.

1/2" x 2" STAINLESS STEEL BOLT x 2  
 1/2" STAINLESS STEEL FLAT WASHER x 4  
 1/2" STAINLESS STEEL LOCK WASHER X 2  
 1/2" STAINLESS STEEL NUT X 2

3/4" X S 1/2" STEEL BOLT X 1  
 3/4" STEEL FALT WASHER X 2  
 3/" STEEL LOCK WASHER X 1  
 3/4" STEEL NUT X 1

1/2" X 1 1/2" STEEL BOLT X 4



H.E.S. PV

84 MORROW RD.  
 BARRIE, ON L4N 3V8  
 1-866-258-0110  
 WWW.HESPV.COM

PROJECT:

-

USED ON ASS'Y:

-

CLONE FROM:

100888

UNLESS OTHERWISE SPECIFIED:

DIMENSIONS ARE IN INCHES  
 TOLERANCES:  
 FRACTIONAL  $\pm 1/16$   
 ANGULAR: MACH  $\pm$  BEND  $\pm$   
 TWO PLACE DECIMAL  $\pm 0.06$   
 THREE PLACE DECIMAL  $\pm 0.03$

INTERPRET GEOMETRIC  
 TOLERANCING PER:

MATERIAL:

DETAIL G

FINISH:

SCALE 1 : 6

DRAWN

NAME

AT

DATE

5/24/17

CHECKED

-

ENG APPR.

MFG APPR.

Q.A.

TITLE: FR-TPM6-UNI ASSEMBLY

DWG. NO.

104983

REV

-

SCALE: NTS

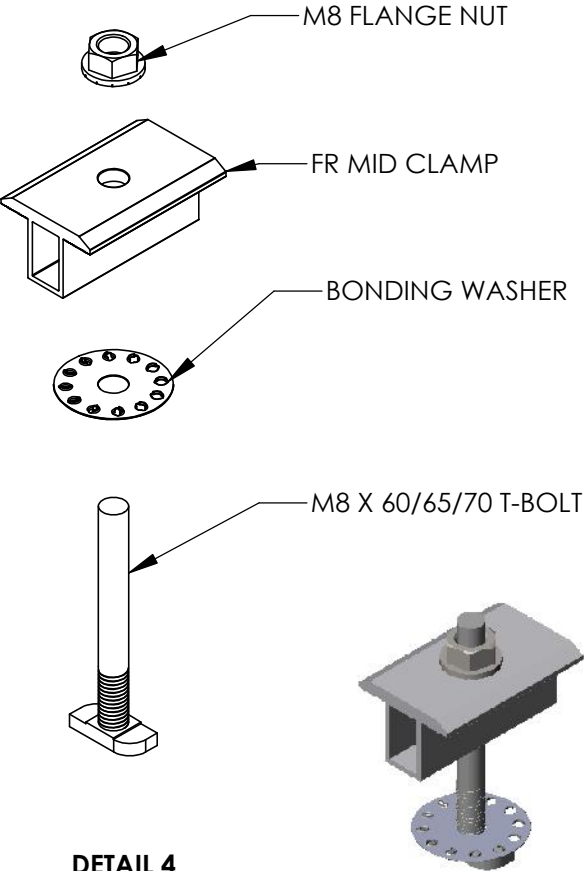
SHEET SIZE: A

SHEET 3 OF 4

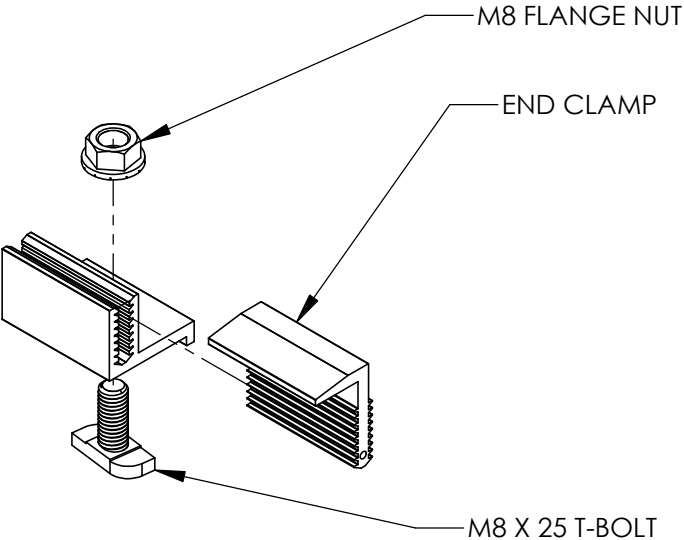
**PROPRIETARY AND CONFIDENTIAL**  
 THE INFORMATION CONTAINED IN THIS DRAWING IS THE SOLE PROPERTY OF  
 HOME ENERGY SOLUTIONS. ANY REPRODUCTION IN PART OR AS A WHOLE  
 WITHOUT THE WRITTEN PERMISSION OF H.E.S. PV IS PROHIBITED.

NOTES:

-BONDING WASHER TO BE USED ON EVERY MID CLAMP



DETAIL 4  
FR-MID CLAMP



DETAIL 3  
FR-END CLAMP

|  |                |   |  |           |           |      |                             |                               |               |              |
|--|----------------|---|--|-----------|-----------|------|-----------------------------|-------------------------------|---------------|--------------|
| H.E.S. PV  |                |   | UNLESS OTHERWISE SPECIFIED:  |           | NAME      | DATE | TITLE: FR-TPM6-UNI ASSEMBLY |                               |               |              |
| 84 MORROW RD.<br>BARRIE, ON L4N 3V8<br>1-866-258-0110<br>WWW.HESPV.COM   | PROJECT:       | — | DIMENSIONS ARE IN INCHES<br>TOLERANCES:<br>FRACTIONAL ± 1/16<br>ANGULAR: MACH± BEND ±<br>TWO PLACE DECIMAL ± 0.06<br>THREE PLACE DECIMAL ± 0.03<br>INTERPRET GEOMETRIC<br>TOLERANCING PER: |           | DRAWN     | AT   | 5/24/17                     | DWG. NO.<br><div>104983</div> | REV<br>—      |              |
|  | USED ON ASS'Y: |   | -  | MATERIAL: | CHECKED   | -    | -                           |                               |               |              |
|  | CLONE FROM:    |   | 100888   | FINISH:   | ENG APPR. |      |                             |                               |               |              |
|  |                |   |  | MFG APPR. |           |      |                             |                               |               |              |
| PROPRIETARY AND CONFIDENTIAL<br>THE INFORMATION CONTAINED IN THIS DRAWING IS THE SOLE PROPERTY OF<br>HOME ENERGY SOLUTIONS. ANY REPRODUCTION IN PART OR AS A WHOLE<br>WITHOUT THE WRITTEN PERMISSION OF H.E.S. PV IS PROHIBITED. |                |   |  |           | Q.A.      |      |                             | SCALE: NTS                    | SHEET SIZE: A | SHEET 4 OF 4 |